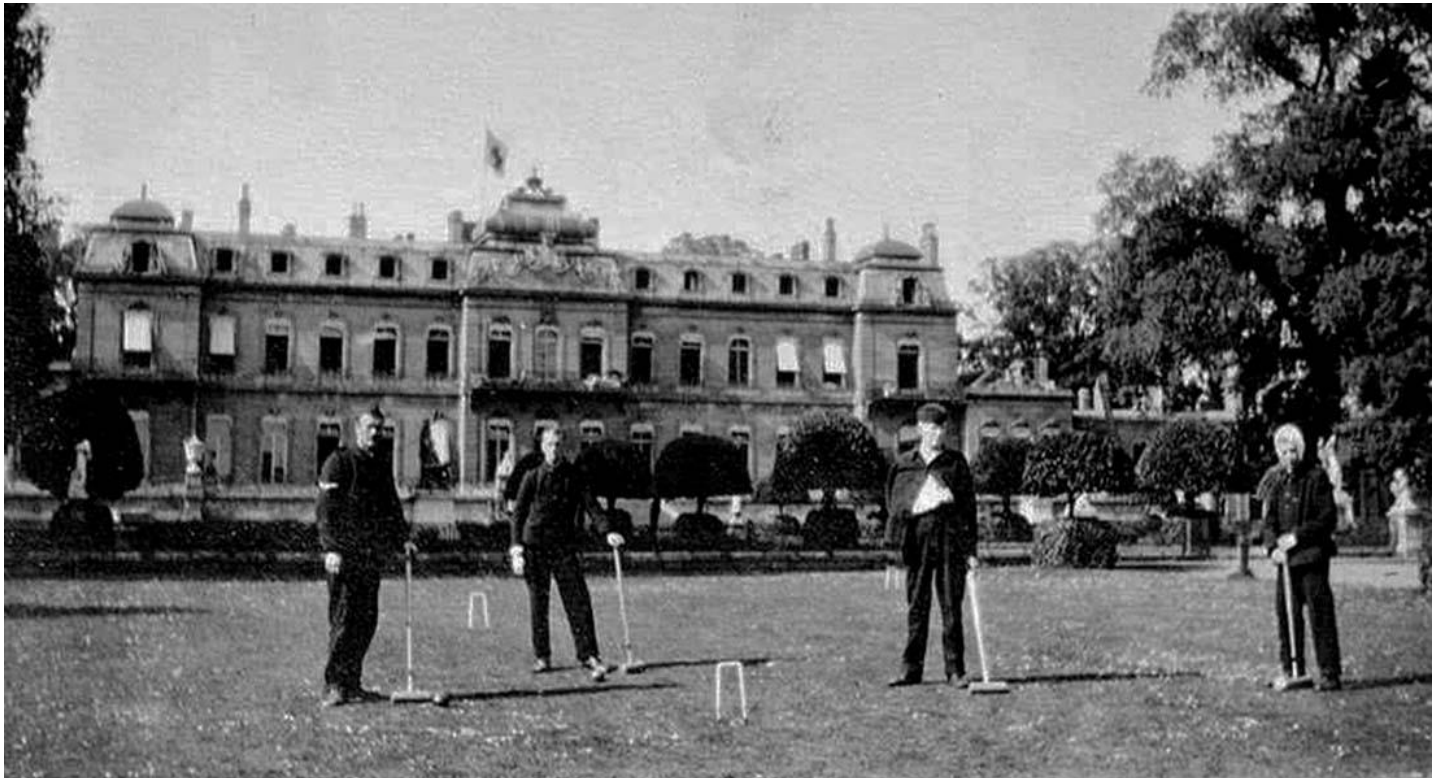




newsletter



In 1914 Wrest Park, owned by Auberon Herbert, 9th Baron Lucas, was offered to the Admiralty for use as a hospital. The Navy had no use for it, and it became a convalescent home for soldiers (as seen above) until November 1914 when it did indeed become a hospital. This lasted until the house was badly damaged by fire in September 1916. Two months later Auberon Herbert was killed in action.

With acknowledgements to the copyright holder.

Annual General Meeting

The 2015 AGM will be on **Wednesday 11th March at 8pm** at the Star & Garter in Silsoe.

1. Apologies for absence
2. Minutes of 2014 AGM and matters arising
3. Reports: **Chairman**
Secretary
Treasurer
CA Tournament Secretary
Club Tournament Secretary
Groundsman
4. Election of officers
5. Dates for 2015
6. Early season lawn work
7. Relationship with football and cricket clubs
8. Pavilion maintenance and other site work
9. Equipment
10. Tournament catering
11. EH, CA and EACF news
12. Any other business

If you can't get to the AGM but have a subject you would like us to discuss, please let me know.

Subscriptions for 2015

The subscription rates for 2015 are as follows:

Full membership	£55
CA levy	£8.40
Junior membership (under 16)	£10
16-18 or full time student	£20

- The CA levy is payable by all full members unless they are also members of another CA **member** club and have nominated that club as their main club. Any member who is also a member of a CA **affiliated** club has to pay the levy.
- Please check the details on your membership form, make any corrections and return it with your subscription before 1 April. You will then be sent your membership card which shows the relevant numbers for the locks on the door of the pavilion and the storage cupboard inside it. Membership cards must be carried at all times and shown to EH on request.
- Please indicate your availability to help with tournament catering by circling dates on the membership form. If you've never done it before and what to know what's involved please call Tim Brewer.
- **Please return your form even if you don't want to renew your membership, or if you joined as a full member last year and therefore don't have to pay.** In the former case it helps us maintain an accurate

membership list, in the latter we need to receive the form before you can be sent your membership card.

- There is a family membership option. If two adults in a family both take out full membership then any children under 16 from that family get free junior membership.
- If you want to pay your subscription using internet banking please confirm your intention to do so with Eric beforehand, and use sort code 20-05-74, account 80983861 (Wrest Park Croquet Club). Please make sure your name is referenced in the payment.
- The green fee for members' individual guests and any groups for which individual members are responsible has been raised to £4 per person per session. Please record these payments in the Visitor's Book in the pavilion. Members can bring three guests free of charge during the season.
- The green fee for independent visiting groups requiring a member to supervise them is now £5.50 per person and the member who is looking after the group can claim £20 expenses.

Dates for 2015

April

18 Start of season social day from 11am
25-26 Lawns closed (EH event access)

May

9 Silsoe School football tournament*
16-17 CA AC Handicap tournament
20 CA GC B level tournament
24-25 Lawns closed (EH event access)

June

13 Club GC singles tournament
28 EACF GC Champions Day tournament

July

3-5 CA AC Advanced tournament
8 Kempston Rotary (evening group visit)
11 Club GC doubles tournament
24-26 CA Eastern Championship

August

1-2 CA AC Advanced tournament
6 Dunstable CC visit 10-5 4 lawns

September

19-20 CA AC Handicap tournament

October

4 EACF GC Handicap leagues playoff

* This a big event involving hundreds of players and spectators. It is a date best avoided for matches as access to the pavilion will be restricted, but individual games are possible and indeed are to be recommended as it guarantees a presence and might attract interest. You will have to park in the field beyond the pitches.

Lawn maintenance and match day coordination

This year we shall be mowing more frequently and will also be doing more regular lawn work such as spiking and fertiliser (granular and liquid) application. There will also be more home matches as Colworth CC will be playing GC league fixtures at Wrest Park. **Please make sure you inform the Secretary of any proposed league match dates or any other proposed events as soon as possible.** Don't just write them down on the

calendar in the pavilion as that only informs those who happen to see it.

Social on 18 April from 11am

This will be an open day with food and drink provided. If you know anyone who is interested in joining the club, this would be an ideal opportunity to introduce them.

Index points for 14 point AC games (e.g. De Grey Plate)

Note that from now on these count for 10 index points and not 5 as previously. See the February issue of the CA Gazette, page 22.

3D croquet lawn

If you haven't seen this already, you should. Go to <http://www.oxfordcroquet.com/coach/3d/index.asp>.

John Bevington

16 February 2015